



**River Corridor Foundation of St. Charles
Request for Proposal to Develop Concept Plans
For
Eastbank River Enhancement Project**

December 5, 2022

I. Executive Summary

The River Corridor Foundation of St. Charles (RCF) is a 501C(3) non-profit corporation founded in 2003 with the mission of enhancing the aesthetics and accessibility of the Fox River and its river front as it flows through St. Charles, IL. RCF has an extensive history of collaborating with the City of St. Charles, the St. Charles Park District and local private foundations to achieve notable results including numerous public art installations, enhanced walking and cycling trails, creating river access points for non-motorized watercraft and improved landscaping. RCF generally serves as the instigator for such projects and works in tandem with the City and the Park District on implementation and construction.

II. Background/Introduction

In 2012, RCF, the City of St. Charles, the St. Charles Park District and the Kane County Forest Preserve created a task force to create a broad concept plan for enhancing the impact that the Fox River could play as a catalyst for economic development, enhancing trail and waterway connectivity throughout the city and provide improved recreational activities in and along the river. The Active River Project (ARP) created a concept plan that was adopted by both the City and the Park District as amendments to their respective comprehensive plans. While small segments of ARP have been implemented, moving the plan from concept to reality has been stalled primarily due to funding issues. Moving the overall Active River Project from the concept stage to a detailed engineering and construction phase has yet to occur. It is RCF's desire that the creation of and construction of an enhanced riverfront in this segment will serve as a tangible demonstration of the potential impact of implementing the entire ARP to the community as a whole, as well as to successfully address a number of safety and connectivity issues.

III. Target Demonstration Site for Detailed Riverfront Enhancements

RCF has identified a segment of riverfront along the eastern shoreline to develop a detailed concept plan for significant enhancements to the adjacent trail, river embankment and river access. The identified segment of riverfront is bordered by Illinois Ave. on the north and the Piano Factory Pedestrian bridge on the south. This project site is connected on the south to the Fox River Bike Trail and trail users heading north are directed along city street signage to reconnect to the trail approximately one mile north.

IV. Requested Services

- a) Proposal to develop three (3) concept plans with rough construction and engineering cost estimates for consideration to address opportunities for enhancements to the target shoreline.
- b) Estimated cost to develop these concept plans in sufficient detail to facilitate extensive evaluation.
- c) Examples of concept plans developed for similar urban river shoreline enhancement projects, with reference contact information.
- d) Relevant qualifications of the team that would be actively involved in the development of these concept plans and their respective qualifications.

V. Opportunities for Enhancements

Many years ago, the City elected to place broken concrete slabs along the 4' - 6' high embankment of this segment of the riverbank for erosion control. While successful in that regard, the concrete and the accompanying vegetation has a negative aesthetic and provides unsafe access to the river for anglers and others. However, maintaining erosion control is essential to any enhancement proposal for this area. In addition, the Fox Valley Bike Trail runs parallel to the river here, narrowly hemmed between South Riverside Drive and the embankment. At the juncture of the bike trail and Illinois Avenue there is a very small surge area, forcing groups of pedestrians and cycles to spill onto the vehicular traffic areas of Illinois Avenue and Riverside Drive. Similarly, an unsafe congestion point exists at the entrance/egress of the bike trail onto the Piano Factory Pedestrian Bridge. Increasing the width of the trail (separating cycle and pedestrian traffic) would be desirable as would consideration for improved connectivity to the entire Fox River Trail system heading both north and south from this demonstration project area. Creating addition separation between the trail and the vehicular traffic on Riverside Drive would also be desirable. Improving landscaping aesthetics, creating viewing areas and providing safe ADA compliant access to the river for anglers and potentially non-motorized watercraft would also constitute significant enhancements in any proposed concept plan.

VI. Public Utilities

As indicated in the attached Geo-maps from the City of St. Charles, this demonstration segment of the riverfront has sanitary, storm sewer and water service connections; as well as overhead electric service along the bike trail and under the Piano Factory pedestrian bridge. Any proposed enhancement concepts must accommodate these utility services.

VII. Site Information

The City of St. Charles owns all of the land within the scope of this project as well as the adjacent Riverside Drive, the Illinois Street and the Piano Factory bridges that span the Fox River. The river itself as well as the St. Charles dam (approximately 200 yards to the north) are owned by the Illinois Department of Natural Resources. The maintenance of the cycle/pedestrian trail is managed by the St. Charles Park District under an intergovernmental agreement with the City of St. Charles.

VIII. Selection of engineering/design firm to develop concept plans

A project committee has been created consisting of RCF board members, City of St. Charles aldermen, St. Charles Park District Board Commissioners and St. Charles Park District staff members who will serve as an advisory panel to the River Corridor Foundation to select an engineering/design firm to develop concept plans and to evaluate the concept plans once produced. Selection of the engineering/design firm will be based upon an evaluation of the qualifications, experience and perceived creativity of the proposals received from each respondent. The estimated cost of developing these concept plans will be considered, but will not be the only determining factor in the selection process.

IX. Project Timing

Request for Proposal issued:	December 5, 2022
Response to Request for Proposal due:	March 1, 2023 by 4:00 PM
Selection of 2-3 respondents for interviews:	May 1, 2023
Recommended firm notified:	May 30, 2023
Submission of concept plans for review:	September 1, 2023

X. Contact Information

All communication relative to this project should be directed to:

John Rabchuk
 914 Ash Street
 St. Charles, IL 60174
 630.926.7548
johnrabchuk@gmail.com

All RFP submittals and correspondence must be submitted via email to johnrabchuk@gmail.com

Attached:

City of St. Charles geomaps indicating relevant utility locations

References:

River Corridor Foundation of St. Charles - stcrivercorridor.org
 St. Charles Active River Project - stcharlesactiveriver.org



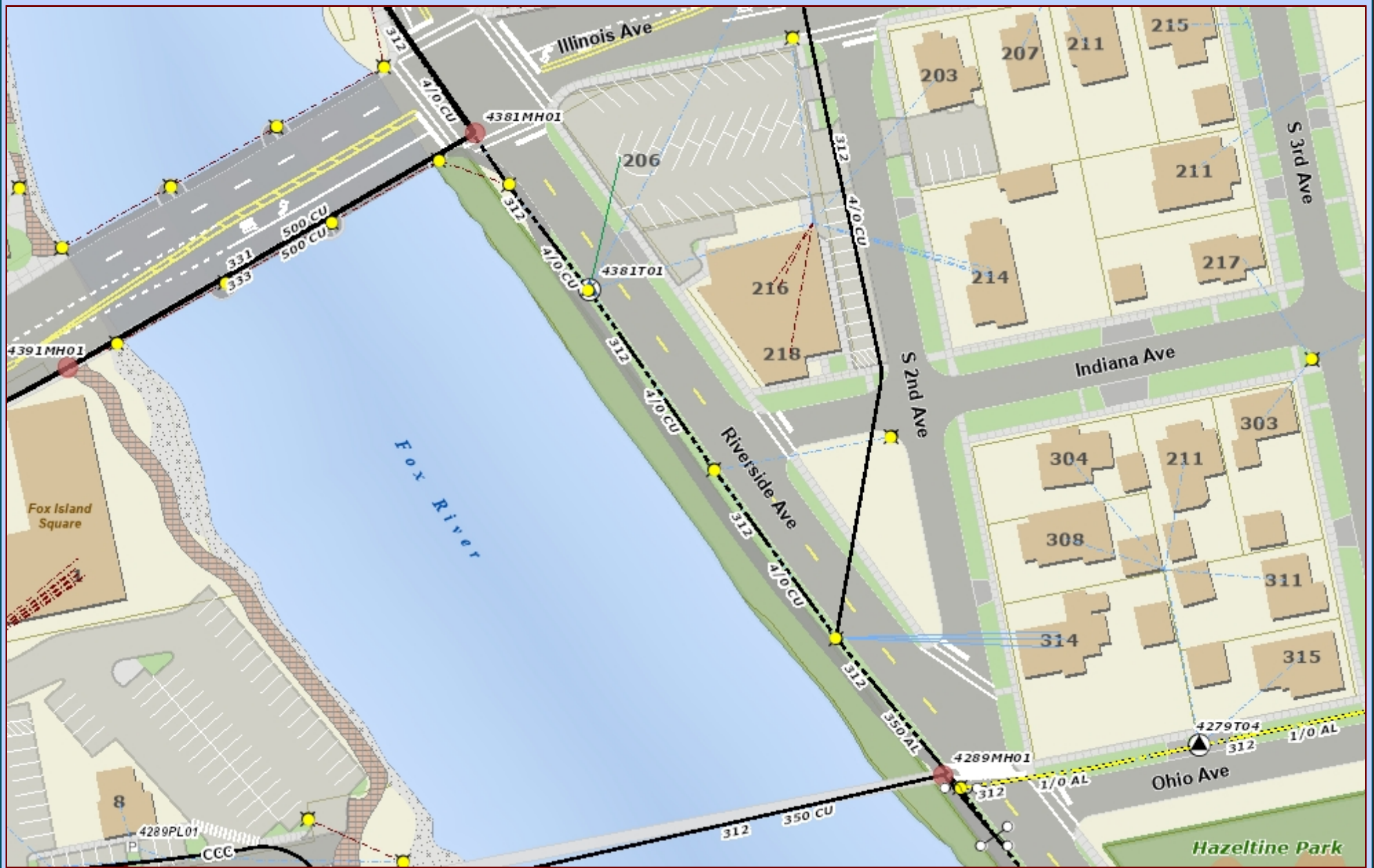
Data Source:
 City of St. Charles, Illinois
 Kane County, Illinois
 DuPage County, Illinois
 Projection: Transverse Mercator
 Coordinate System: Illinois State Plane East
 North American Datum 1983
 Printed on: October 20, 2022 01:02 PM



0 41 81 Feet

Water Mains

This work was created for planning purposes only and is provided as is, without warranty of any kind, either expressed or implied. The information represented may contain proprietary and confidential property of the City of St. Charles, Illinois. Under United States Copyright protection laws you may not use, reproduce, or distribute any part of this document without prior written permission. To obtain written permission please contact the City of St. Charles at Two East Main Street, St. Charles, IL 60174.
 Powered by Precision GIS



Data Source:
City of St. Charles, Illinois
Kane County, Illinois
DuPage County, Illinois
Projection: Transverse Mercator
Coordinate System: Illinois State Plane East
North American Datum 1983
Printed on: October 20, 2022 01:00 PM



Electric

This work was created for planning purposes only and is provided as is, without warranty of any kind, either expressed or implied. The information represented may contain proprietary and confidential property of the City of St. Charles, Illinois. Under United States Copyright protection laws you may not use, reproduce, or distribute any part of this document without prior written permission. To obtain written permission please contact the City of St. Charles at Two East Main Street, St. Charles, IL 60174.
Powered by Precision GIS



Data Source:
 City of St. Charles, Illinois
 Kane County, Illinois
 DuPage County, Illinois
 Projection: Transverse Mercator
 Coordinate System: Illinois State Plane East
 North American Datum 1983
 Printed on: October 20, 2022 01:01 PM



0 41 81 Feet

Sanitary Sewer

This work was created for planning purposes only and is provided as is, without warranty of any kind, either expressed or implied. The information represented may contain proprietary and confidential property of the City of St. Charles, Illinois. Under United States Copyright protection laws you may not use, reproduce, or distribute any part of this document without prior written permission. To obtain written permission please contact the City of St. Charles at Two East Main Street, St. Charles, IL 60174.
 Powered by Precision GIS



Data Source:
City of St. Charles, Illinois
Kane County, Illinois
DuPage County, Illinois
Projection: Transverse Mercator
Coordinate System: Illinois State Plane East
North American Datum 1983
Printed on: October 20, 2022 01:02 PM



0 41 81 Feet

Storm Sewer

This work was created for planning purposes only and is provided as is, without warranty of any kind, either expressed or implied. The information represented may contain proprietary and confidential property of the City of St. Charles, Illinois. Under United States Copyright protection laws you may not use, reproduce, or distribute any part of this document without prior written permission. To obtain written permission please contact the City of St. Charles at Two East Main Street, St. Charles, IL 60174.
Powered by Precision GIS



Data Source:
 City of St. Charles, Illinois
 Kane County, Illinois
 DuPage County, Illinois
 Projection: Transverse Mercator
 Coordinate System: Illinois State Plane East
 North American Datum 1983
 Printed on: October 20, 2022 01:02 PM



0 41 81 Feet

Water Mains

This work was created for planning purposes only and is provided as is, without warranty of any kind, either expressed or implied. The information represented may contain proprietary and confidential property of the City of St. Charles, Illinois. Under United States Copyright protection laws you may not use, reproduce, or distribute any part of this document without prior written permission. To obtain written permission please contact the City of St. Charles at Two East Main Street, St. Charles, IL 60174.
 Powered by Precision GIS



Data Source:
City of St. Charles, Illinois
Kane County, Illinois
DuPage County, Illinois
Projection: Transverse Mercator
Coordinate System: Illinois State Plane East
North American Datum 1983
Printed on: October 20, 2022 01:00 PM



Electric

This work was created for planning purposes only and is provided as is, without warranty of any kind, either expressed or implied. The information represented may contain proprietary and confidential property of the City of St. Charles, Illinois. Under United States Copyright protection laws you may not use, reproduce, or distribute any part of this document without prior written permission. To obtain written permission please contact the City of St. Charles at Two East Main Street, St. Charles, IL 60174.
Powered by Precision GIS